

The background features a series of thin, light blue wavy lines that create a sense of motion and depth, flowing across the bottom and sides of the frame.

>< PARSEPORT

><<<<<<<<<<<

a **workiva** company



# Sobre ParsePort

- +5.500 clients XBRL confían en nosotros desde 2011.
- +1.000 reportes ESEF convertidos por año.
- Parte de Workiva desde abril de 2022.
- Declaración de auditoría ISAE 3402 (International Standard on Assurance Engagements).





# Una plataforma



**ESEF**



**ESG**



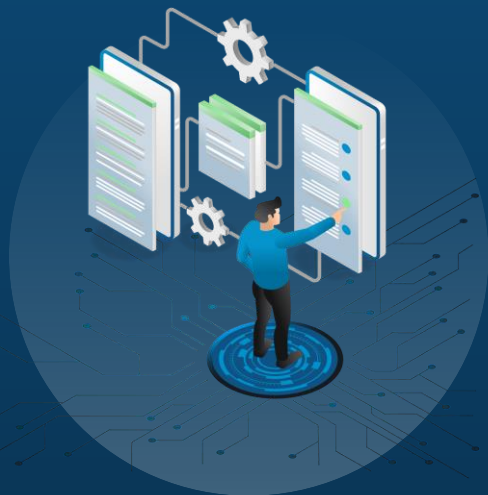
**EIOPA**



**EBA**

+ IFRS y otras taxonomías locales

# Nos diferencia



**Etiquetado**



**Gráfica**



**Tiempo**

En vivo



The screenshot displays the Parseport software interface. The main window shows a 'Consolidated Statement of Changes in Equity' for the year ending 31 December 2028. The table includes columns for various financial metrics and rows for different equity components. The sidebar on the right, titled 'Facts & Elements', shows details for a specific fact, including its concept, label, date, value, and accuracy. Below this, there are calculations for issued capital, retained earnings, and other reserves. The interface also includes a navigation menu at the top with options like 'IMPORT', 'SUMMARY', 'VIEWER', 'FACTS', 'EXTENSIONS', and 'COMPARE'.

	Current	Other	Additional	Retained	Accumulated	Share-based	Other	Total
	Year	Year	Contributions	Earnings	Other	Payments	Reserves	Equity
Balance at 31 December 2024	1,964	337	6,447	20,761	324	4,373	(2,007)	31,799
Net Earnings				6,910	422,097			434,007
Stock-based payment	39		132					171
Share-based payment tax effects					25			25
Foreign Currency Translation Adjustments				(130)				(130)
Cash Flow Hedges, net of tax								
Exercised stock options					(84)	(5,064)		(5,148)
Repurchase of own shares				(2,345)				(2,345)
Cash Dividends (€0.99 per share)								(45)
Balance at 31 December 2027	1,963	339	6,730	25,320	427,492	4,389	(17,971)	454,478
Net Earnings				2,283	555,367			561,150
Stock-based payment	21		104					125
Share-based payment tax effects					87			87
Foreign Currency Translation Adjustments					18			18
Cash Flow Hedges, net of tax								
Exercised stock options					(102)	(4,085)		(4,187)
Repurchase of own shares								(1,685)
Cash Dividends (€1.87 per share)								(76)
Balance at 31 December 2028	2,004	340	6,399	31,424	987,162	4,197	(11,910)	1,017,476



Email Address

flb@parseport.com

Password

.....

LOG IN

OR

SIGN IN WITH MICROSOFT


FORGOT PASSWORD?

# IMPORT



Drag & Drop

OR

 BROWSE FILES

To get started



Open

« Sales » Presentations » Current » - DEMO - Vert Hydro Solutions

Organize New folder

Name	Date modified	Type
DEMO-v1.7.3_condensed	06/11/2023 15:18	Adobe Acrobat Doc
DEMO-v1.7.3_condensed	06/11/2023 14:57	Microsoft Excel Wor
DEMO-v1.7.3_condensed_with_ERROR	10/11/2023 10:42	Adobe Acrobat Doc
DEMO-v1.7.3_condensed_with_ERROR	10/11/2023 10:44	Microsoft Excel Wor
DEMO-v1.7.3_full	06/11/2023 15:03	Adobe Acrobat Doc
DEMO-v1.7.3_full	06/11/2023 14:57	Microsoft Excel Wor

File name: "DEMO-v1.7.3\_condensed\_with\_ERROR" "DEMO-v1.7.3\_condensed\_with\_ERROR"

Custom Files

Open Cancel

Pla x +

Search - DEMO - Vert Hydro ...

Modern Health

All Bookmarks

IMPORT



# Gracias



Florencia Barca  
Regional Account Executive  
[flb@parseport.com](mailto:flb@parseport.com)  
+45 31 69 21 60  
[LinkedIn](#)